

09

Cable entry plate



FNS[®]

Cable entry plate

- 9.1 KDL detachable series
- 9.2 KDP direct plug-in series
- 9.3 KBL detachable series
- 9.4 KML peeling series (metal frame)
- 9.5 KPL peeling series
- 9.6 SF customized high protection series

KDL cable entry system

KDL cable entry system

Frame model	Small sealing ring	Large sealing ring	Order number	Schematic diagram
KDL 10/3	3	0	171011	
KDL 16/4	4	0	171012	
KDL 24/5	5	0	171016	
KDL 2/10	10	0	171017	
KDL 3/15	15	0	171018	

Schematic diagram

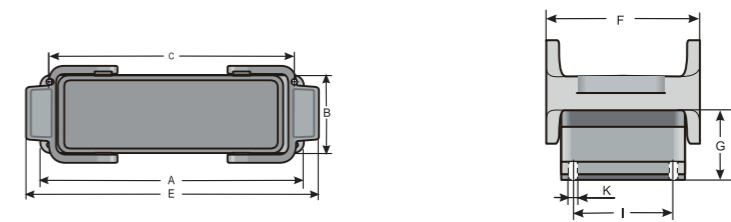
Cabinet installation

- 40 - 80 oC
- PA 6.6
- V0
- IP 54



Type	Order number	Color	Number of holes small/large	Matching model	Amm	Bmm
KD/SG -24/4	171034	Grey	4 / -	-	120	43

Type	Order number	Color	Matching model	Amm	Bmm	Cmm	Imm	Fmm	Gmm	Imm	Kmm
H24B-AG	09300240301	Grey	KD/SG -24/4	140	44	103	155	55	27	32	4.5



Note: For details on matching rubber ring KDT/Z, see 9.1.02

- 40 - 80 oC
- TPR
- HB
- IP 54



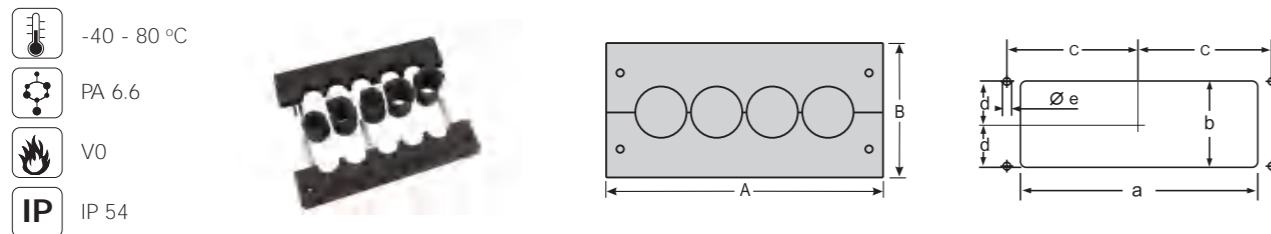
Small - sealing rubber ring

Type	Order number	Color	Wire diameter(mm)	Applicable specifications small/large
KDT/Z 03	171212	Black	3 - 4	● / -
KDT/Z 04	171214	Black	4 - 5	● / -
KDT/Z 05	171216	Black	5 - 6	● / -
KDT/Z 06	171218	Black	6 - 7	● / -
KDT/Z 07	171220	Black	7 - 8	● / -
KDT/Z 08	171222	Black	8 - 9	● / -
KDT/Z 09	171224	Black	9 - 10	● / -
KDT/Z 10	171226	Black	10 - 11	● / -
KDT/Z 11	171228	Black	11 - 12	● / -
KDT/Z 12	171230	Black	12 - 13	● / -
KDT/Z 13	171232	Black	13 - 14	● / -
KDT/Z 14	171234	Black	14 - 15	● / -
KDT/Z 15	171236	Black	15 - 16	● / -

Sealing plug

Type	Order number	Color	Wire diameter(mm)	Applicable specifications small/large
BTK- Ⓟ	171210	Black	-	● / - 10

Note: For details on matching rubber ring KDT/Z, see 9.1.02



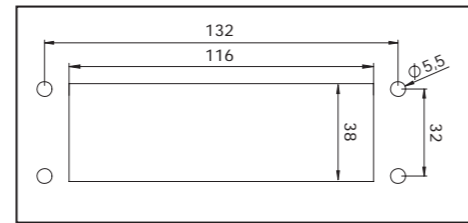
Standard opening specifications

Type	Order number	Color	Number of holes small/large	Amm	Bmm	Installation height (mm)	amm	bmm	cmm	dmm	emm
KDL 10/3	171011	Black	3 / -	96.0	58.0	10.0	66.0	36.0	41.5	16.0	5.5
KDL 16/4	171012	Black	4 / -	116.0	58.0	10.0	86.0	36.0	51.5	16.0	5.5
KDL 24/5	171016	Black	5 / -	146.0	58.0	10.0	112.0	36.0	65.0	16.0	5.5
KDL 2/10	171017	Black	10 / -	146.0	90.0	10.0	112.0	55.0	65.0	32.0	5.5
KDL 3/15	171018	Black	15 / -	146.0	122.0	10.0	112.0	96.0	65.0	48.0	5.5

KDL cable entry system

Material: Improved nylon (halogen-free)
 Temperature range: -30°C to +70°C
 Protection level: IP65
 Flame retardant performance (UL94): V0
 Colour: Black

Hole Size

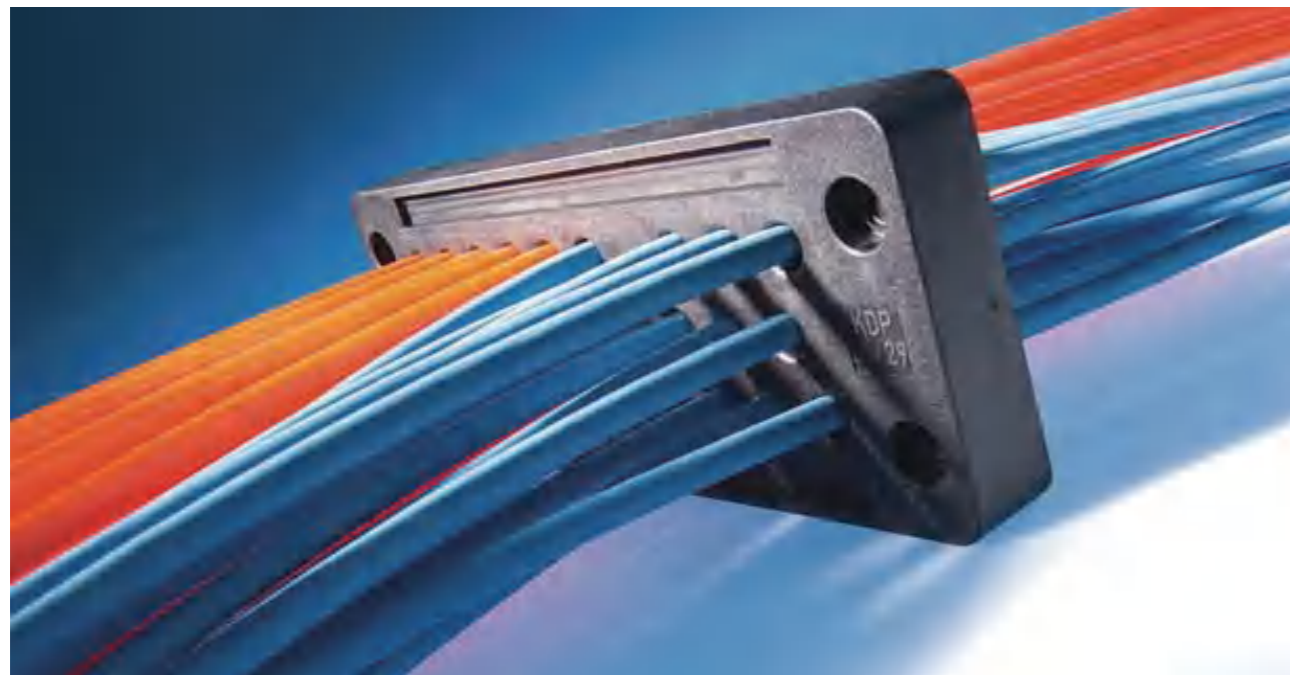


Advantage

- ◆ Save space
- ◆ Protection level IP65
- ◆ Built-in sealing structure
- ◆ One-piece use
- ◆ Possibility of cable identification

Technical parameters

- ◆ Cutting surface 112×36mm
- ◆ KDP external dimensions: L=147mm×B=59mm×15 mm
- ◆ Tensile properties comply with DIN/EN 50262/98
- ◆ Resistant to weak acids and alkalis



KDL cable entry system



Type	Clamping range (mm)							Number of threads	Order number	Schematic diagram
	3.0-6.5	4.1-8.1	5.0-9.2	8.0-12.5	9.0-14.0	9.6-15.9	14.0-20.0			
KDP 24/11	4	/	4	/	/	/	3	11	301110	
KDP 24/12	/	/	/	12	/	/	/	12	301120	
KDP 24/13	2	6	/	/	4	/	1	13	301130	
KDP 24/14	6	/	4	/	/	4	/	14	301140	
KDP 24/17	/	/	17	/	/	/	/	17	301150	
KDP 24/17-	11	1	/	5	/	/	/	17	301151	
KDP 24/22-	16	/	4	2	/	/	/	22	301160	
KDP 24/22	15	/	6	/	/	/	1	22	301161	
KDP 24/23	/	23	/	/	/	/	/	23	301170	
KDP 24/29	29	/	/	/	/	/	/	29	301180	
KDP 24/29-	26	/	3	/	/	/	/	29	301181	
BP 24	/	/	/	/	/	/	/	0	171624	

KDP cable entry plate (round)



Type	Order number	Cable quantity	Thread Metric	Outside diameter	Beyond aperture
KDP 63/13	043761	4 x 3.2 - 6.5 mm 4 x 5.0 - 10.2 mm 5 x 9.0 - 16.2 mm	M63	mm	8.0 mm

KBL cable entry system

KBL E detachable frame



Material: Polyamide (PA)
 Flame retardant grade: UL94-V0, self-extinguishing
 Protection level: IP54, use sealing gasket and correctly select grommets (in accordance with DIN EN 60529:2000-09)
 Temperature range: -40°C to +90°C (static)
 Features: Halogen-free, silicon-free
 KBL height: 17 mm

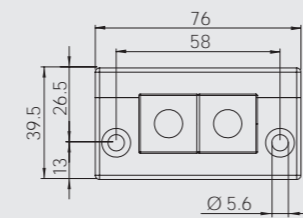


Accessories: Separable core grommets. See pages 9.3.12-9.3.15 for module specifications.

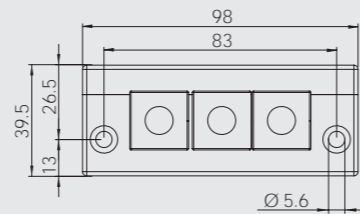


Frame model	Hole Size(mm)	KT module quantity small/large	Order number
KBL E2	43 × 24	2 / -	040602
See pages 9.3.12-9.3.15 for module specifications.			

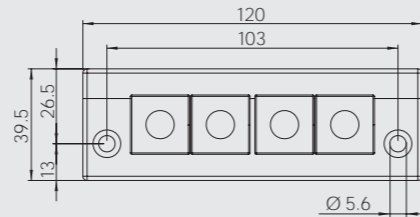
Schematic diagram



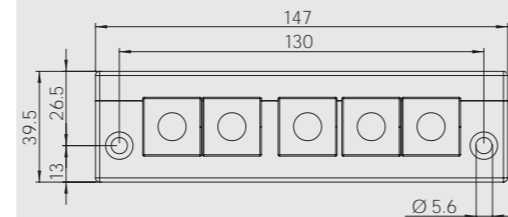
Frame model	Hole Size(mm)	KT module quantity small/large	Order number
KBL E3	65 × 24	3 / -	041003
See pages 9.3.12-9.3.15 for module specifications.			



Frame model	Hole Size(mm)	KT module quantity small/large	Order number
KBL E4	86 × 24	4 / -	041604
See pages 9.3.12-9.3.15 for module specifications.			



Frame model	Hole Size(mm)	KT module quantity small/large	Order number
KBL E5	112 × 24	5 / -	042405
See pages 9.3.12-9.3.15 for module specifications.			



KBL cable entry system

KBL 6 detachable frame



Material: Polyamide (PA)
 Flame retardant grade: UL94-V0, self-extinguishing
 Protection level: IP54, use sealing gasket and correctly select grommets (in accordance with DIN EN 60529:2000-09)
 Temperature range: -40°C to +90°C (static)
 Features: Halogen-free, silicon-free
 Hole Size: 37 × 40 mm
 KBL height: 17 mm

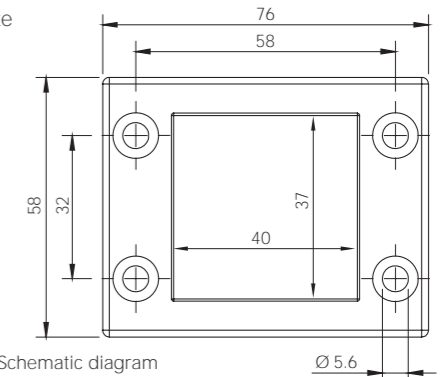


Accessories: For specifications of separable core grommets, see pages 9.3.12-9.3.15

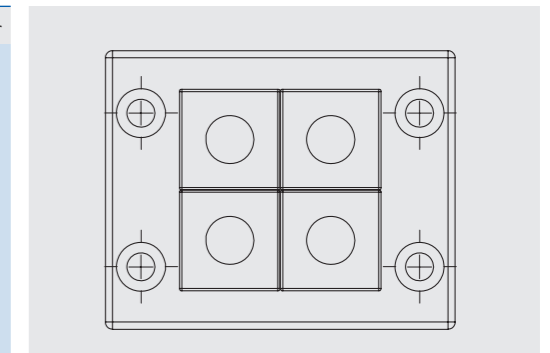
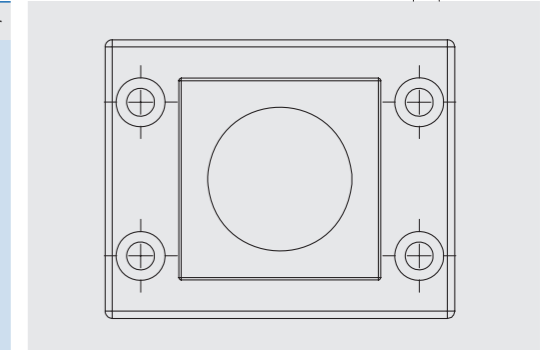


Frame model	KT module quantity small/large	Order number
KBL 6/1	- / 1	040601
See pages 9.3.12-9.3.15 for module specifications.		

Schematic diagram



Frame model	KT module quantity small/large	Order number
KBL 6/4	4 / -	040604
See pages 9.3.12-9.3.15 for module specifications.		



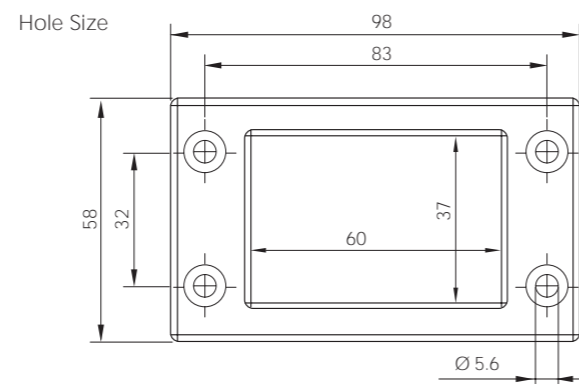
KBL 10 detachable frame



Material: Polyamide (PA)
 Flame retardant grade: UL94-V0, self-extinguishing
 Protection level: IP54, use sealing gasket and correctly select grommets (in accordance with DIN EN 60529:2000-09)
 Temperature range: -40°C to +90°C (static)
 Features: Halogen-free, silicon-free
 Hole Size: 37 × 60 mm



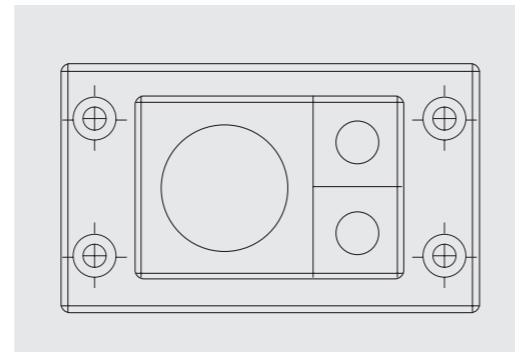
Accessories: Separable core grommets. See pages 9.3.12-9.3.15 for module specifications.



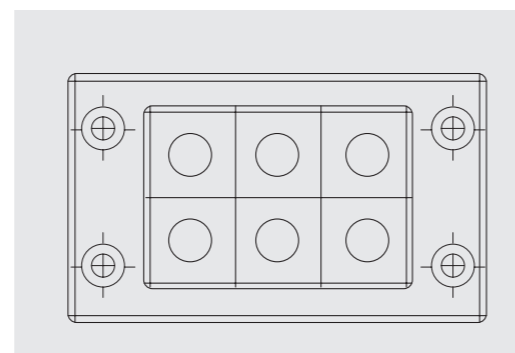
Schematic diagram



Frame model	KT module quantity small/large	Order number
KBL 10/3	2 / 1	041004
See pages 9.3.12-9.3.15 for module specifications.		



Frame model	KT module quantity small/large	Order number
KBL 10/6	6 / -	041006
See pages 9.3.12-9.3.15 for module specifications.		



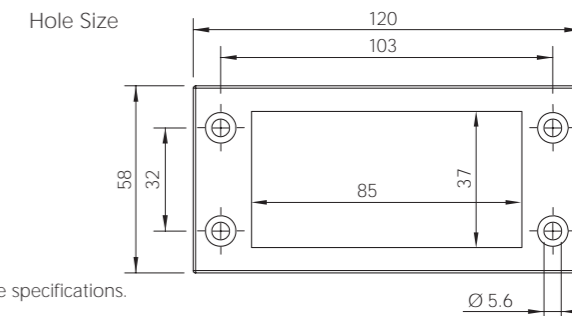
KBL 16 detachable frame



Material: Polyamide (PA)
 Flame retardant grade: UL94-V0, self-extinguishing
 Protection level: IP54, use sealing gasket and correctly select grommets (in accordance with DIN EN 60529:2000-09)
 Temperature range: -40°C to +90°C (static)
 Features: Halogen-free, silicon-free
 Hole Size: 37 × 85 mm
 KBL height: 17 mm



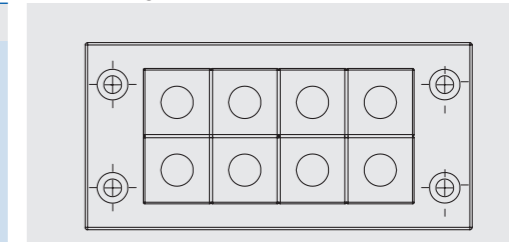
Accessories: Separable core grommets. See pages 9.3.12-9.3.15 for module specifications.



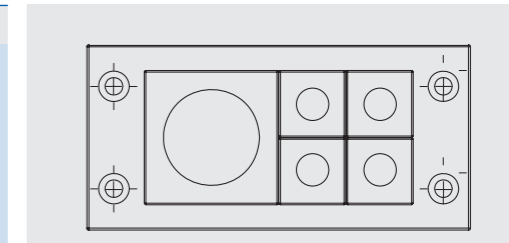
Schematic diagram



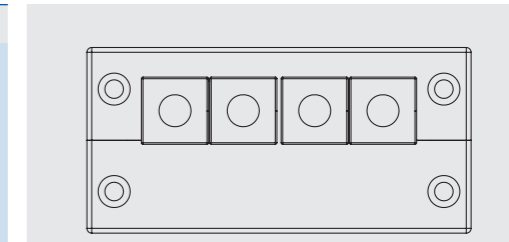
Frame model	KT module quantity small/large	Order number
KBL 16/8	8 / -	042168
See pages 9.3.12-9.3.15 for module specifications.		



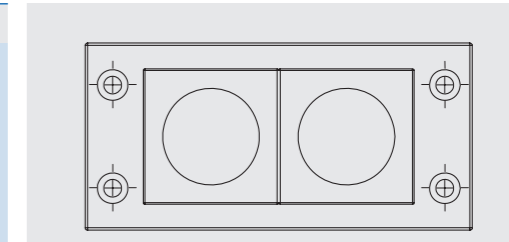
Frame model	KT module quantity small/large	Order number
KBL 16/5	4 / 1	042165
See pages 9.3.12-9.3.15 for module specifications.		



Frame model	KT module quantity small/large	Order number
KBL 16/4	4 / -	042164
See pages 9.3.12-9.3.15 for module specifications.		



Frame model	KT module quantity small/large	Order number
KBL 16/2	- / 2	042162
See pages 9.3.12-9.3.15 for module specifications.		

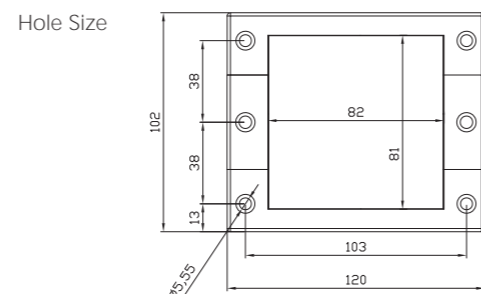


KBL cable entry system

KBL 16-MT detachable frame



Material: Polyamide (PA)
 Flame retardant grade: UL94-V0, self-extinguishing
 Protection level: IP54, use sealing gasket and correctly select grommets (in accordance with DIN EN 60529:2000-09)
 Temperature range: -40°C to +90°C (static)
 Features: Halogen-free, silicon-free
 Hole Size: 81 × 82 mm
 KBL height: 17 mm

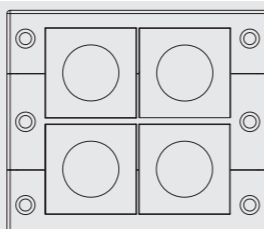


Accessories: Separable core grommets. See pages 9.3.12-9.3.15 for module specifications.

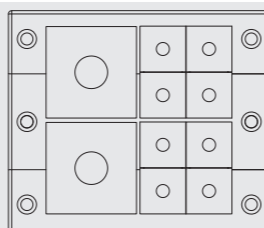


Frame model	KT module quantity small/large	Order number
KBL 16/4-MT	- / 4	044164
See pages 9.3.12-9.3.15 for module specifications.		

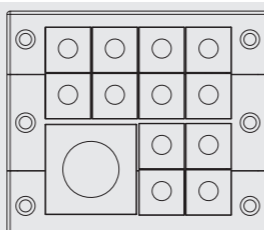
Schematic diagram



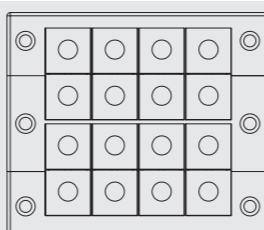
Frame model	KT module quantity small/large	Order number
KBL 16/10-MT	8 / 2	044161
See pages 9.3.12-9.3.15 for module specifications.		



Frame model	KT module quantity small/large	Order number
KBL 16/13-MT	12 / 1	044162
See pages 9.3.12-9.3.15 for module specifications.		



Frame model	KT module quantity small/large	Order number
KBL 16/16-MT	16 / -	044163
See pages 9.3.12-9.3.15 for module specifications.		

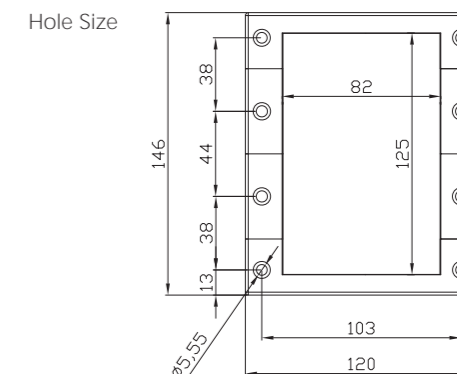


KBL cable entry system

KBL 16-2MT detachable frame



Material: Polyamide (PA)
 Flame retardant grade: UL94-V0, self-extinguishing
 Protection level: IP54, use sealing gasket and correctly select grommets (in accordance with DIN EN 60529:2000-09)
 Temperature range: -40°C to +90°C (static)
 Features: Halogen-free, silicon-free
 Hole Size: 125 × 82 mm
 KBL height: 17 mm

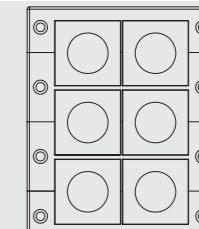


Accessories: Separable core grommets. See pages 9.3.12-9.3.15 for module specifications.

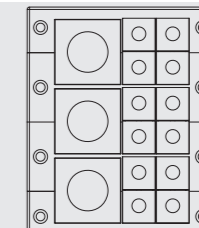


Frame model	KT module quantity small/large	Order number
KBL 16/6-2MT	0 / 6	044166
See pages 9.3.12-9.3.15 for module specifications.		

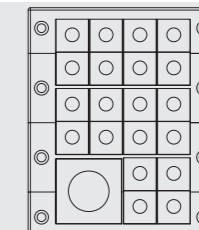
Schematic diagram



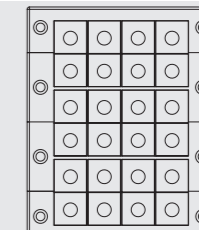
Frame model	KT module quantity small/large	Order number
KBL 16/15-2MT	12 / 3	044167
See pages 9.3.12-9.3.15 for module specifications.		



Frame model	KT module quantity small/large	Order number
KBL 16/21-2MT	20 / 1	044168
See pages 9.3.12-9.3.15 for module specifications.		



Frame model	KT module quantity small/large	Order number
KBL 16/24-2MT	24 / -	044169
See pages 9.3.12-9.3.15 for module specifications.		

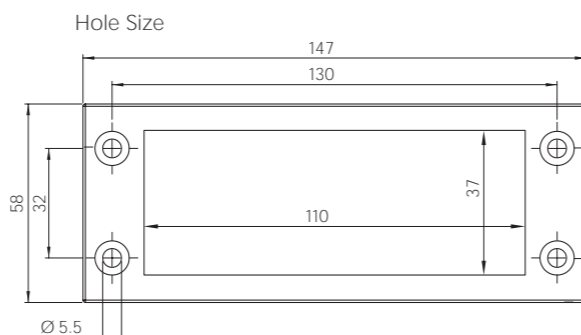


KBL cable entry system

KBL 24 detachable frame



Material: Polyamide (PA)
 Flame retardant grade: UL94-V0, self-extinguishing
 Protection level: IP54, use sealing gasket and correctly select grommets (in accordance with DIN EN 60529:2000-09)
 Temperature range: -40°C to +90°C (static)
 Features: Halogen-free, silicon-free
 Hole Size: 37 × 110 mm
 KBL height: 17 mm



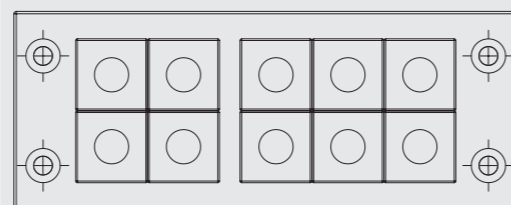
Accessories: Separable core grommets. See pages 9.3.12-9.3.15 for module specifications.



Frame model	KT module quantity small/large	Order number
KBL 24/10	10 / -	042241

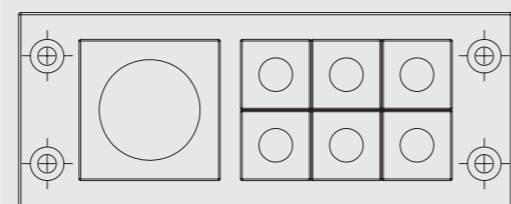
See pages 9.3.12-9.3.15 for module specifications.

Schematic diagram



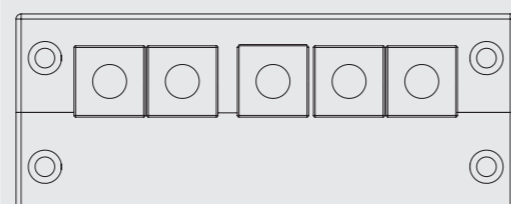
Frame model	KT module quantity small/large	Order number
KBL 24/7	6 / 1	042247

See pages 9.3.12-9.3.15 for module specifications.



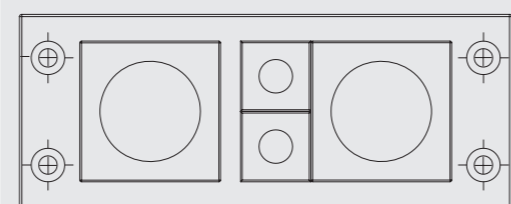
Frame model	KT module quantity small/large	Order number
KBL 24/5	5 / -	042248

See pages 9.3.12-9.3.15 for module specifications.



Frame model	KT module quantity small/large	Order number
KBL 24/4	2 / 2	042244

See pages 9.3.12-9.3.15 for module specifications.



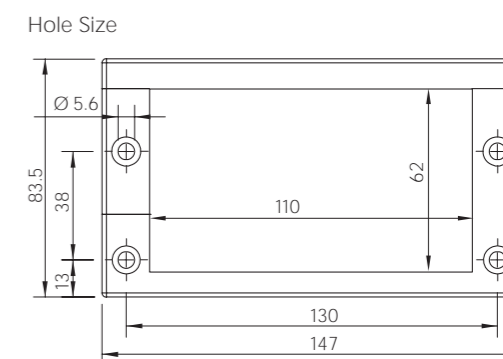
KBL cable entry system



KBL 24-E detachable frame



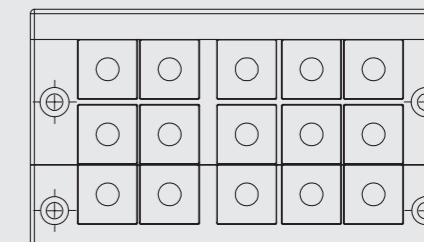
Material: Polyamide (PA)
 Flame retardant grade: UL94-V0, self-extinguishing
 Protection level: IP54, use sealing gasket and correctly select grommets (in accordance with DIN EN 60529:2000-09)
 Temperature range: -40°C to +90°C (static)
 Features: Halogen-free, silicon-free
 Hole Size: 62 × 110 mm
 KBL height: 17 mm



Schematic diagram

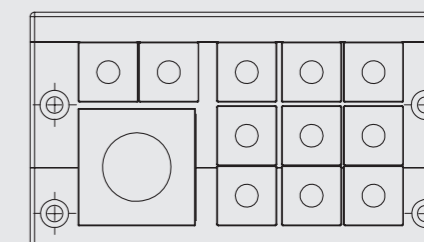
Frame model	KT module quantity small/large	Order number
KBL 24/15-E	15 / -	042209

See pages 9.3.12-9.3.15 for module specifications.



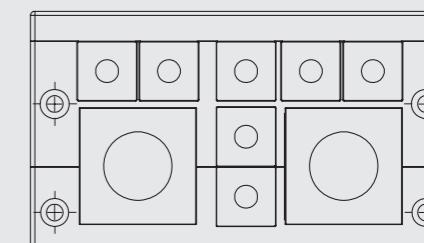
Frame model	KT module quantity small/large	Order number
KBL 24/12-E	11 / 1	042208

See pages 9.3.12-9.3.15 for module specifications.



Frame model	KT module quantity small/large	Order number
KBL 24/9-E	7 / 2	042207

See pages 9.3.12-9.3.15 for module specifications.

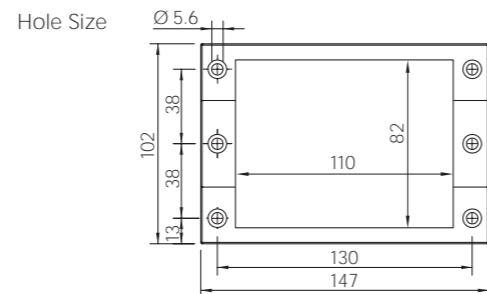


KBL cable entry system

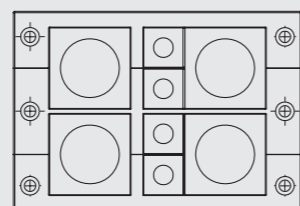
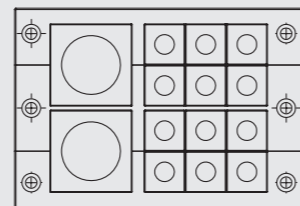
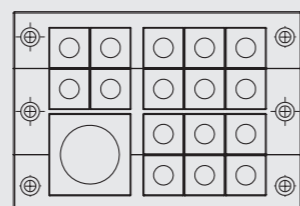
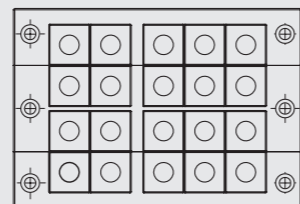
KBL 24-MT detachable frame



Material: Polyamide (PA)
 Flame retardant grade: UL94-V0, self-extinguishing
 Protection level: IP54, use sealing gasket and correctly select grommets (in accordance with DIN EN 60529:2000-09)
 Temperature range: -40°C to +90°C (static)
 Features: Halogen-free, silicon-free
 Hole Size: 82 × 110 mm
 KBL height: 17 mm



Schematic diagram



Frame model	KT module quantity small/large	Order number
KBL 24/20-MT	20 / -	042232
See pages 9.3.12-9.3.15 for module specifications.		

Frame model	KT module quantity small/large	Order number
KBL 24/17-MT	16 / 1	042224
See pages 9.3.12-9.3.15 for module specifications.		

Frame model	KT module quantity small/large	Order number
KBL 24/14-MT	12 / 2	042225
See pages 9.3.12-9.3.15 for module specifications.		

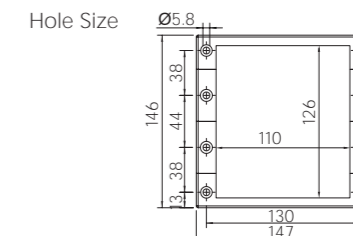
Frame model	KT module quantity small/large	Order number
KBL 24/8-MT	4 / 4	042221
See pages 9.3.12-9.3.15 for module specifications.		

KBL cable entry system

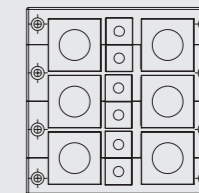
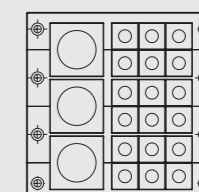
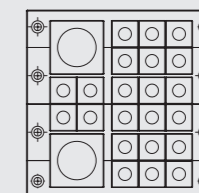
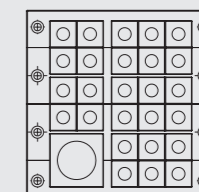
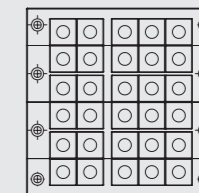
KBL 24-2MT detachable frame



Material: Polyamide (PA)
 Flame retardant grade: UL94-V0, self-extinguishing
 Protection level: IP54, use sealing gasket and correctly select grommets (in accordance with DIN EN 60529:2000-09)
 Temperature range: -40°C to +90°C (static)
 Features: Halogen-free, silicon-free
 Hole Size: 126 × 110 mm
 KBL height: 17 mm



Schematic diagram



Frame model	KT module quantity small/large	Order number
KBL 24/30-2MT	30 / -	042234
See pages 9.3.12-9.3.15 for module specifications.		

Frame model	KT module quantity small/large	Order number
KBL 24/27-2MT	26 / 1	042233
See pages 9.3.12-9.3.15 for module specifications.		

Frame model	KT module quantity small/large	Order number
KBL 24/24-2MT	22 / 2	042227
See pages 9.3.12-9.3.15 for module specifications.		

Frame model	KT module quantity small/large	Order number
KBL 24/21-2MT	18 / 3	042226
See pages 9.3.12-9.3.15 for module specifications.		

Frame model	KT module quantity small/large	Order number
KBL 24/12-2MT	6 / 6	042223
See pages 9.3.12-9.3.15 for module specifications.		

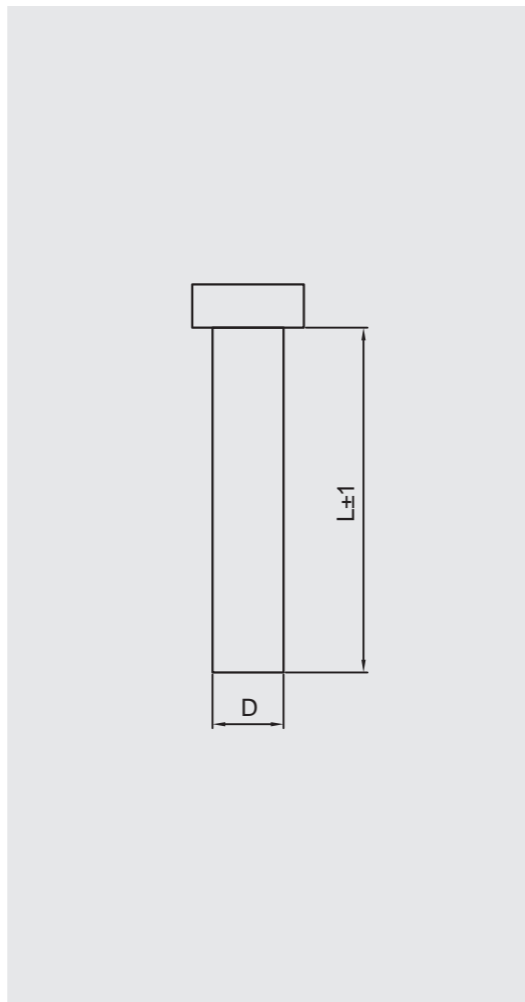
KBL cable entry system

ST module plug (for KT/KTMB module)

Material: Polyamide (PA)
 Flame retardant grade: UL94-V0, self-extinguishing
 Temperature range: -40°C to +90°C (static)
 Features: Halogen-free, silicon-free



Schematic diagram

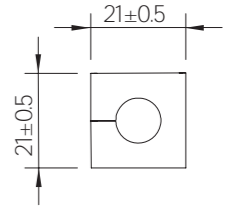



Type	Diameter	length	Order number
ST2	2.0mm	25mm	042909
ST3	3.0mm	25mm	042901
ST4	4.0mm	25mm	042908
ST5	5.0mm	25mm	042906
ST6	6.0mm	25mm	042903
ST7	7.0mm	25mm	042905
ST8	8.0mm	25mm	042899
ST9	9.0mm	25mm	042897
ST10	10.0mm	25mm	042895
ST11	11.0mm	25mm	042893
ST12	12.0mm	25mm	042891
ST13	13.0mm	25mm	042889
ST14	14.0mm	25mm	042887
ST15	15.0mm	25mm	042885
ST16	16.0mm	25mm	042883
ST17	17.0mm	25mm	042881


KBL cable entry system


KT module (small)


Material: Synthetic rubber
 Flame retardant grade: UL94-V0, self-extinguishing
 Protection level: IP65
 Temperature range: -40°C to +90°C (static)
 Features: Halogen-free, silicon-free



BTK	Type	Clamping range	Order number(Grey)
	BTK	None	041251

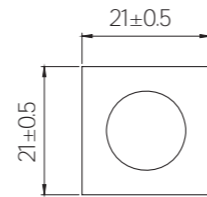
KT (小)	Type	Clamping range	Order number(Grey)
	KT 2	2-3 mm	039934
	KT 3	3-4 mm	041203
	KT 4	4-5 mm	041204
	KT 5	5-6 mm	041205
	KT 6	6-7 mm	041206
	KT 7	7-8 mm	041207
	KT 8	8-9 mm	041208
	KT 9	9-10 mm	041209
	KT 10	10-11 mm	041210
	KT 11	11-12 mm	041211
	KT 12	12-13 mm	041212
	KT 13	13-14 mm	041213
	KT 14	14-15 mm	041214
	KT 15	15-16 mm	041215
	KTs 16	16 mm	039901

KT 2/x	Type	Clamping range	Order number(Grey)
	KT 2/3	2×ø3mm	039939
	KT 2/4	2×ø4mm	039906
	KT 2/5	2×ø5mm	041200
	KT 2/6	2×ø6mm	041201
	KT 2/7	2×ø7mm	041202
	KT 2/8	2×ø8mm	039917

KT 4/x	Type	Clamping range	Order number(Grey)
	KT 4/3	4×ø3mm	039914
	KT 4/4	4×ø4mm	039909
	KT 4/5	4×ø5mm	039908
	KT 4/6	4×ø6mm	039932

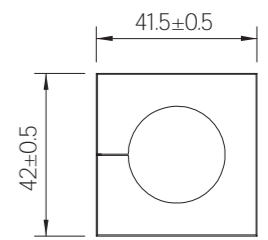
KTP module (small)

Material: Synthetic rubber
 Flame retardant grade: UL94-V0, self-extinguishing
 Protection level: IP65
 Temperature range: -40°C to +90°C (static)
 Features: Halogen-free, silicon-free



KT module (large)

Material: Synthetic rubber
 Flame retardant grade: UL94-V0, self-extinguishing
 Protection level: IP65
 Temperature range: -40°C to +90°C (static)
 Features: Halogen-free, silicon-free



Type	Clamping range	Order number(Grey)
KTP-A	2.5 - 6.5 mm	042565
KTP-B	4 - 7.5 mm	040475
KTP-C	6.5 - 10 mm	046510
KTP-D	9.5 - 13 mm	049513
KTP-E	13 - 16 mm	041316

Type	Clamping range	Order number(Grey)
ATG	Adapter plugged in	041253

Type	Clamping range	Order number(Grey)
BTG	Fill block	041252

Type	Clamping range	Order number(Grey)
KT 16	16-17 mm	041216
KT 17	17-18 mm	041217
KT 18	18-19mm	041218
KT 19	19-20 mm	041219
KT 20	20-21 mm	041220
KT 21	21-22mm	041221
KT 22	22-23 mm	041222
KT 23	23-24 mm	041223
KT 24	24-25mm	041224
KT 25	25-26 mm	041225
KT 26	26-27 mm	041226
KT 27	27-28mm	041227
KT 28	28-29 mm	041228
KT 29	29-30 mm	041229
KT 30	30-31 mm	041230
KT 31	31-32 mm	041231
KT 32	32-33 mm	041232
KT 33	33-34 mm	041233
KT 34	34-35 mm	041234

Type	Clamping range	Order number(Grey)
KTP-D		



Cross Section KTP

Type	Clamping range	Order number(Grey)
KTMB-Ax2	2.5 - 4.5 mm	041493
KTMB-Bx2	4.5 - 7.5 mm	041494

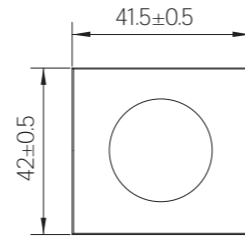


KBL cable entry system

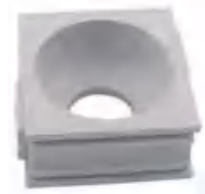
KTB module (large)



Material: Synthetic rubber
 Flame retardant grade: UL94-V0, self-extinguishing
 Protection level: IP65
 Temperature range: -40°C to +90°C (static)
 Features: Halogen-free, silicon-free



Type	Clamping range	Order number(Grey)
KTB-A	13 - 18 mm	041318
KTB-B	18 - 23 mm	041823
KTB-C	23 - 28 mm	042328
KTB-D	28 - 33 mm	042833

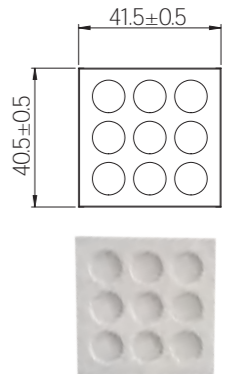


KBL cable entry system

DT module (large)

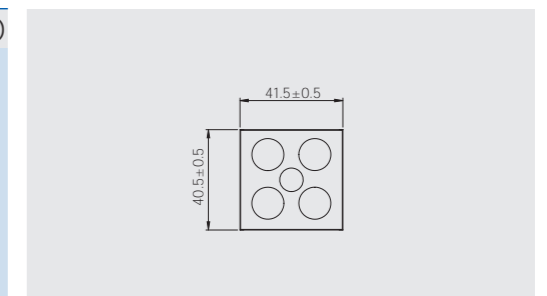
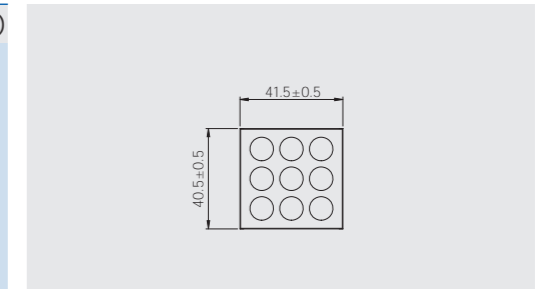


Material: Synthetic rubber
 Flame retardant grade: UL94-V0, self-extinguishing
 Protection level: IP65
 Temperature range: -40°C to +90°C (static)
 Features: Halogen-free, silicon-free



Type	Number of cables	Order number(Grey)
DT4	9xMaximum quantity 9.5mm	041530
DT5	4xMax. 14.5mm 1xMax. 9.5mm	041540

Schematic diagram

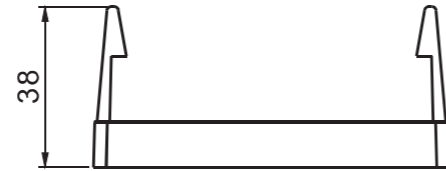


KBL cable entry system

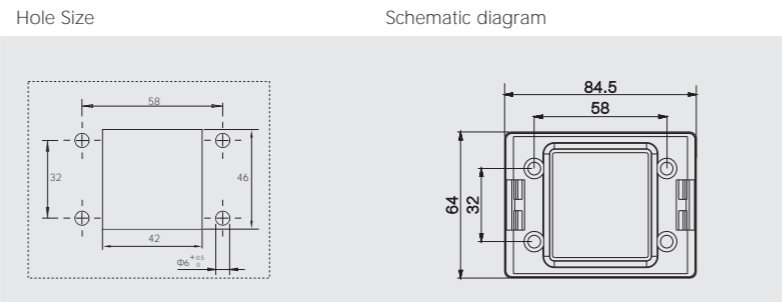
KBL SNAP quick installation base



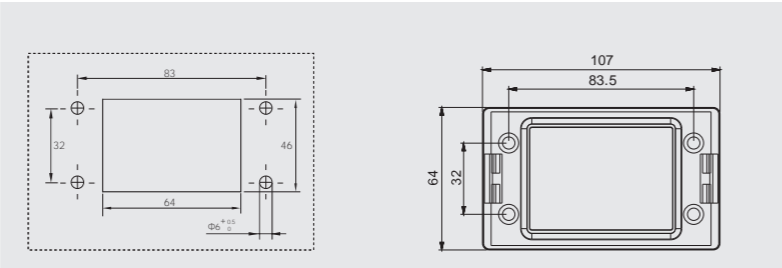
Material: Polyamide (PA)
 Flame retardant grade: UL94-V0, self-extinguishing
 Protection level: IP54, use sealing gasket and correctly select grommets (in accordance with DIN EN 60529:2000-09)
 Temperature range: -40°C to +90°C (static)
 Features: Halogen-free, silicon-free
 Hole Size: 81 × 82 mm
 KBL height: 38 mm



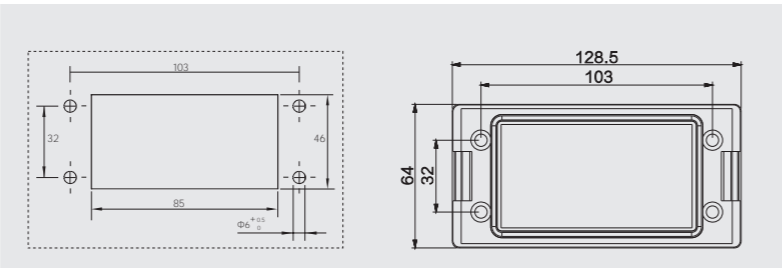
Frame model	Applicable to	Order number
KBL SNAP-6	KBL 6/1 KBL 6/4	040600



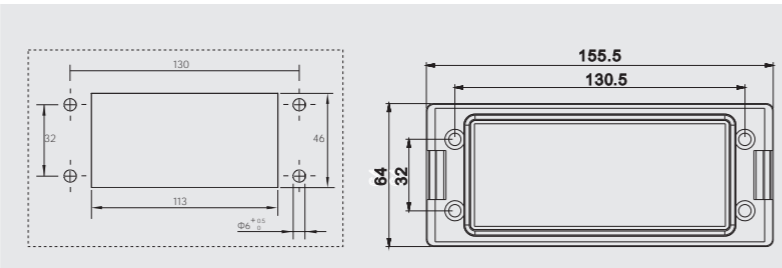
Frame model	Applicable to	Order number
KBL SNAP-10	KBL 10/3 KBL 10/6	041000



Frame model	Applicable to	Order number
KBL SNAP-16	KBL 16/2 KBL 16/4 KBL 16/5 KBL 16/8	041600



Frame model	Applicable to	Order number
KBL SNAP-24	KBL 24/4 KBL 24/5 KBL 24/7 KBL 24/10	042400



KBL cable entry system

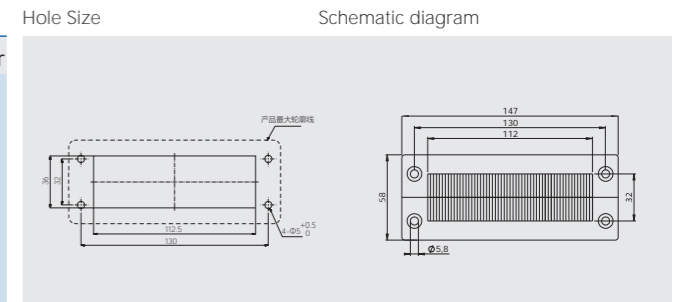
KBL-BES-S brushed cable entry system-detachable

Material: Polyamide (PA)
 Colour: Black
 Temperature range: -20°C to +90°C (static)
 Height: 10mm

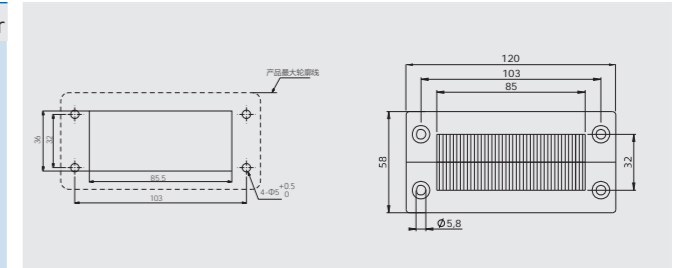


Hole Size Schematic diagram

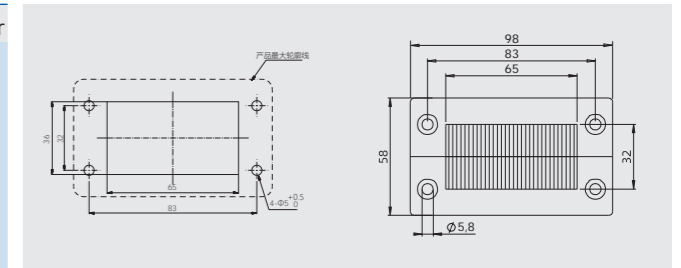
Type	Order number
KBL-BES-S24	042411



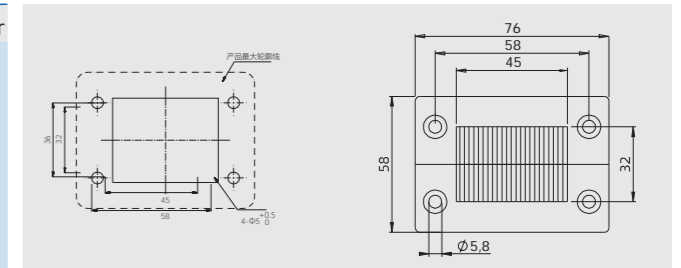
Type	Order number
KBL-BES-S16	041611



Type	Order number
KBL-BES-S10	041011



Type	Order number
KBL-BES-S6	040611



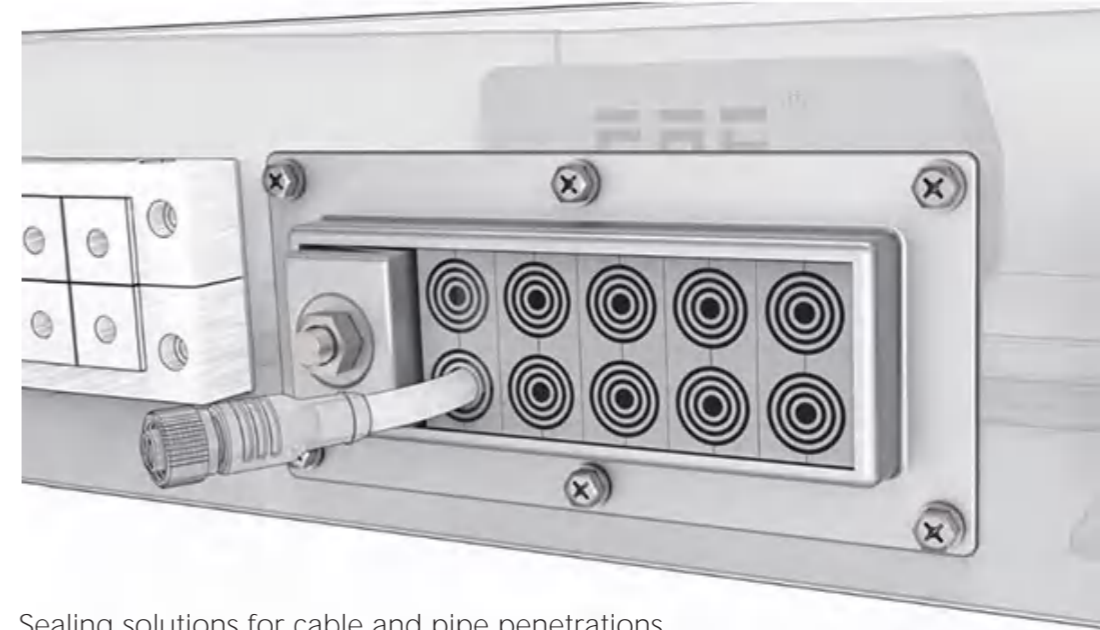
KBL cable entry system



Material: Polycarbonate
 Color: Gray
 Flame retardant grade: UL94-V0, self-extinguishing
 Protection level: IP54, use sealing gasket and correctly select grommets
 Temperature range: -30°C to +100°C (static)
 Features: Halogen-free, silicon-free
 Thread length: 14 mm

	Type	Number of core piercings	Thread specifications	Packaging unit	Number of modules	Order number
	KBL-QVT20	1	M20x1.5	10	Small module*1 20*20 (Maximum diameter 13mm Applicable module specifications KT13 or below)	047201
	KBL-QVT25	1	M25x1.5	10	Small module*1 20*20	047251
	KBL-QVT32	1	M32x1.5	10	Small module*1 20*20	047321
	KBL-QVT40/1	1	M40x1.5	10	Large module*1 40*40	047401
	KBL-QVT40/2	2	M40x1.5	10	Small module*2 20*20 (Maximum diameter 13mm Applicable module specifications KT13 or below)	047402
	KBL-QVT50/1	1	M50x1.5	10	Large module*1 40*40	047501
	KBL-QVT50/4	4	M50x1.5	10	Small module*4 20*20 (Maximum diameter 16mm Applicable module specifications KT16 and below)	047502

KML cable entry system



Sealing solutions for cable and pipe penetrations

	Module Model	Number of cables/pipes	Adaptable cable	Pipe diameter	Order number
	CM 15w40	3	3.5-10.5	15 x 40	154010
	CM 20w40	2	3.5-16.5	20 x 40	204010
	CM 40	1	21.5-34.5	40 x 40	404010
	CM 40 10-32	1	9.5-32.5	40 x 40	404020

KML cable entry system

KML frame, integrated clamping device, aluminum
 RATINGS IP: 55 UL/NEMA: 3, 12, 12K

Diameter range and number of cables/pipes that can be sealed

Kit model (including modules)	0+4.0-16.5mm (CM 20W40)	0+9.5-32.5mm (CM 40 10-32)	Order number
 KML 10/4	2 cable	2 cable	100401
 KML 10/7	6 cable	1 cable	100701
 KML 10/10	10 cable	-	101001
 KML 16/4	-	4 cable	160401
 KML 16/7	4 cable	3 cable	160701
 KML 16/10	8 cable	2 cable	161001

KML cable entry system

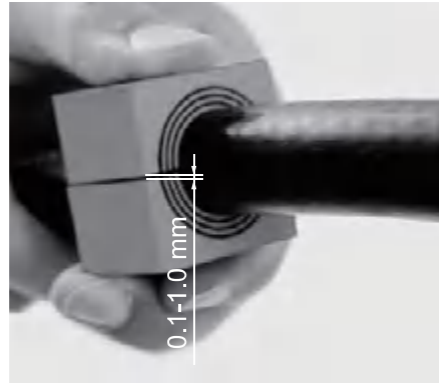
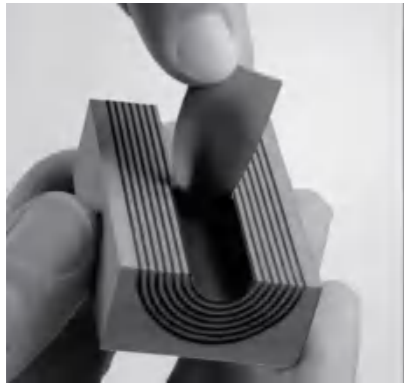
Diameter range and number of cables/pipes that can be sealed

Kit model (including modules)	0+4.0-16.5mm (CM 20W40)	0+9.5-32.5mm (CM 40 10-32)	Order number
 KML 16/16	16 cable	-	161601
 KML 32/8	-	8 cable	320801
 KML 32/14	8 cable	6 cable	321401
 KML 32/20	16 cable	4 cable	322001
 KML 32/32	32 cable	-	323201

KML installation instructions



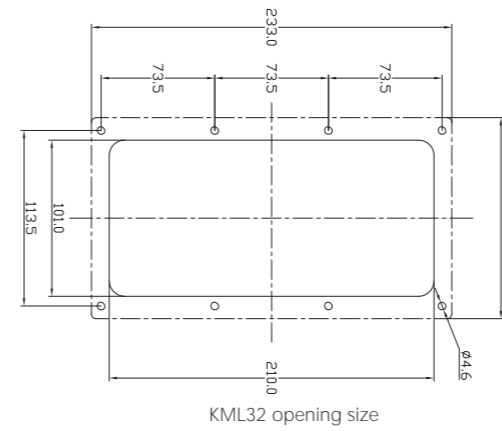
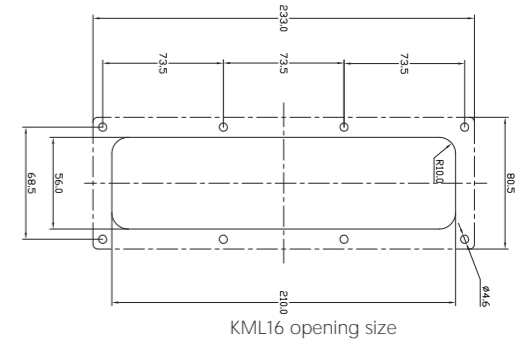
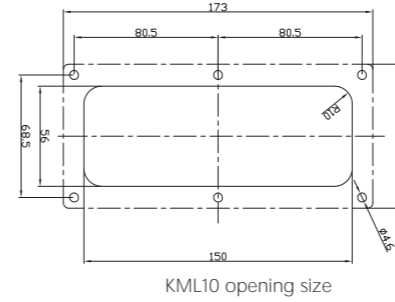
Material: Aluminum
 Temperature range: -40°C to +90°C (static)
 Protection level: IP65
 Application occasions: power control cabinets, communication control cabinets, machine tool control cabinets, automation equipment, power supply cabinets, etc. where cable introduction and extraction are required.



Simply peeling off the core layer allows a single module to seal different diameter cables or pipes. If the center plug is not removed, use the module as a spare part to prepare for future expansion.

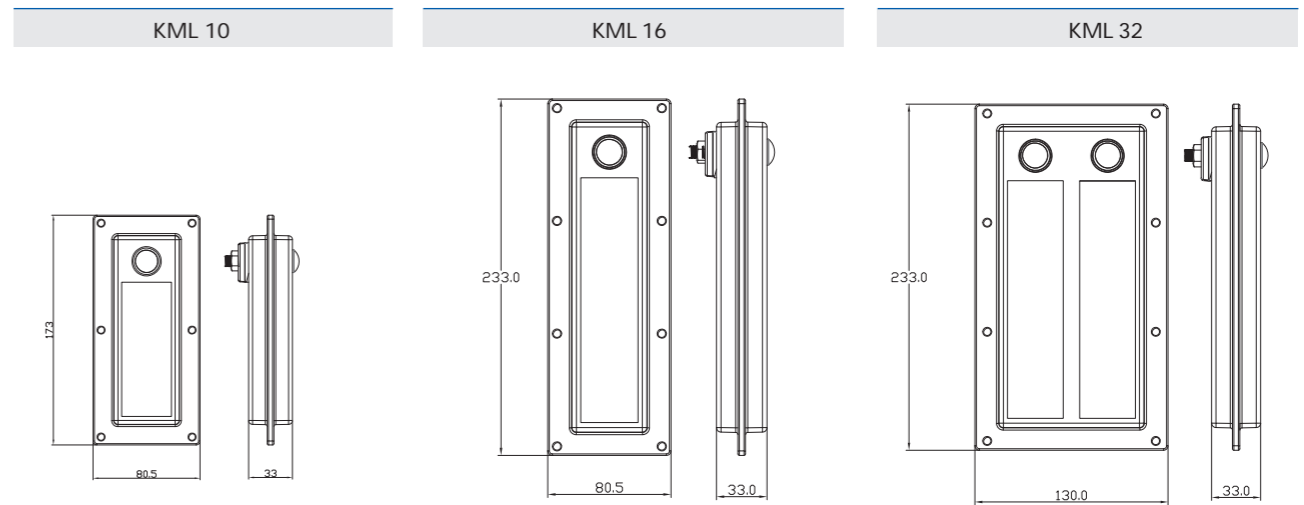
- Applies to CM components
- Seals cables and pipes with diameters between 3.5-32.5mm

KML installation instructions



Painting (conductive) is not allowed in areas where electromagnetic compatibility devices are installed.

KML framework, technical information



KPL cable entry system

KPL 24/48 openable wall panel (variable diameter module)

Material: improved nylon

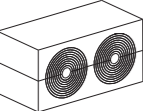
Colour: Black

Temperature range: -40°C to +90°C (static)

Protection level: IP54

Flame retardant grade: UL94-V0, self-extinguishing

Application occasions: power control cabinets, communication control cabinets, machine tool control cabinets, automation equipment, power supply cabinets, etc. where cable introduction and extraction are required.

Type	Clamping range	Cable quantity	Installation thickness	Order number
 PM 20	3.5-14.5	1	20	202001
 PM 20w 40	3.5-16.5	2	20	204011
 PM 20w40-3	3.5-11	3	20	204001
 PM 40	9.5-32.5	1	20	404001

KPL 64 large wire diameter sealing frame

Material: Polyamide (PA)

Flame retardant grade: UL94-V0, self-extinguishing

Protection level: IP54

Temperature range: -40°C to +90°C (static)

Features: Halogen-free, silicon-free

Opening size: round, cable diameter +15%



Type	Clamping range	Dimensions (width x length x height) mm	Order number
 KPL 64 / 1C	25-65mm	111 x 116.5 x 35 (Supporting module model CM80)	086401
 KPL 64 / 2C	25-65mm	201 x 116.5 x 35 (Supporting module model CM80*2)	086402

KPL cable entry system

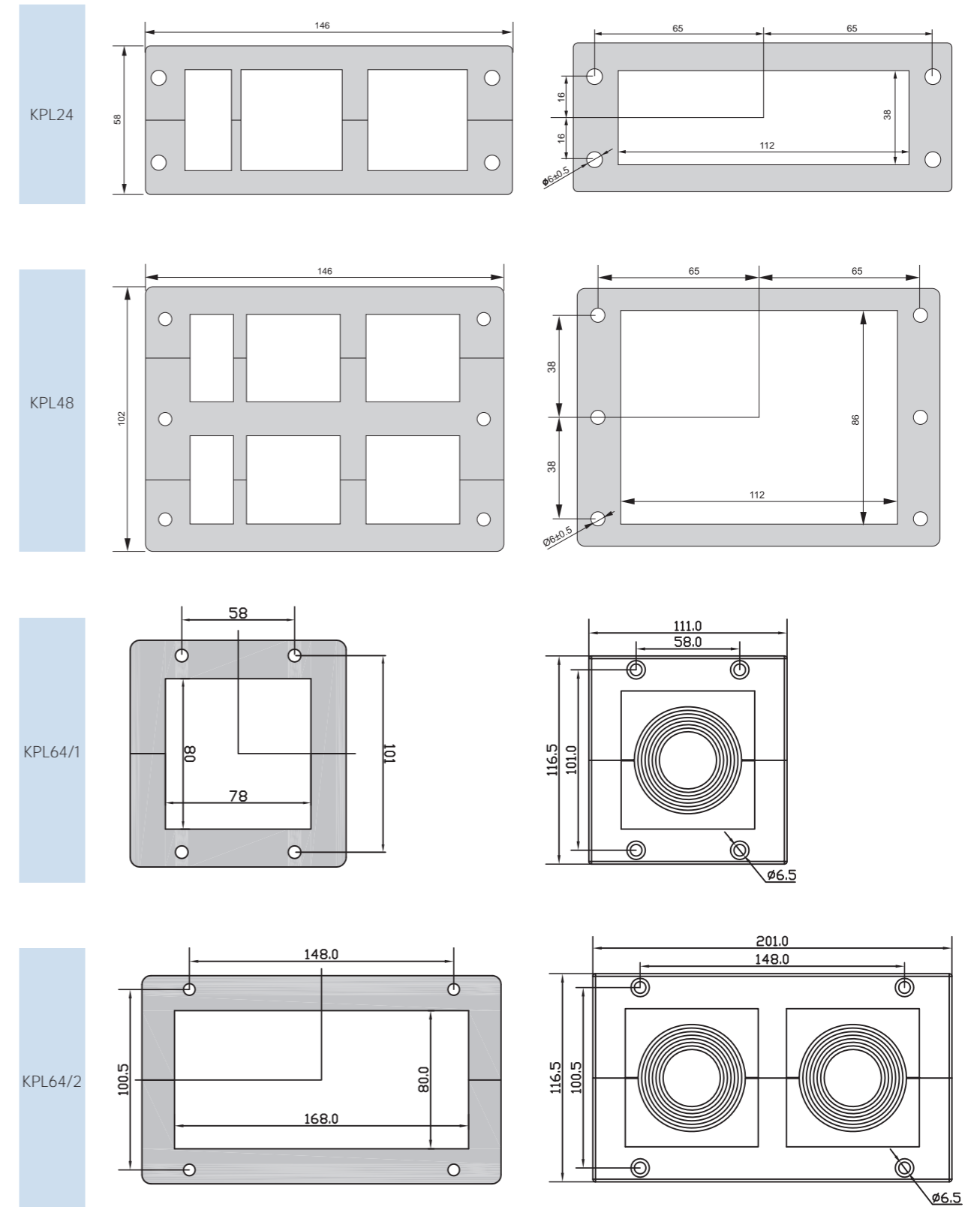


Type	Quantity			Number of cables	Order number
	PM20 Range 3.5-14.5mm	PM40 Range 9.5-32.5mm	PM20w40-3 Range 3.5-11mm		
 KPL 24/14C	2	-	4	14	97020400
 KPL 24/10C	10	-	-	10	97100000
 KPL 24/9C	2	1	2	9	97020401
 KPL 24/7C	6	1	-	7	97060001
 KPL 24/4C	2	2	-	4	97030001

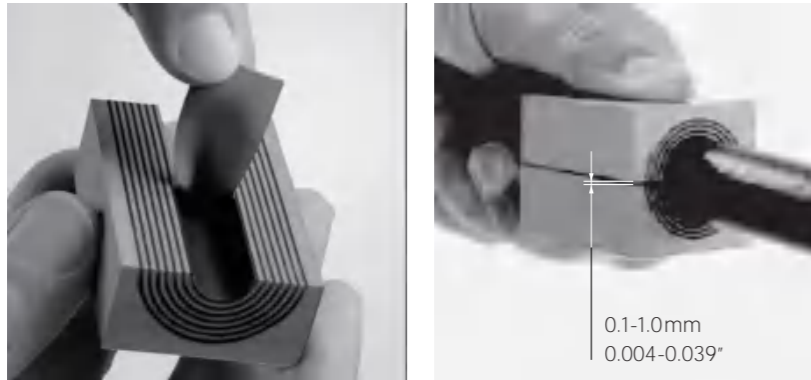


Type	Quantity			Number of cables	Order number
	PM20 Range 3.5-14.5mm	PM40 Range 9.5-32.5mm	PM20w40-3 Range 3.5-11mm		
 KPL 48/28C	4	-	8	28	98040800
 KPL 48/20C	20	-	-	2	98200000
 KPL 48/18C	4	2	4	18	98040402

Hole Size : KPL24 ; KPL48 ; KPL64/1 ; KPL64/2



RM module









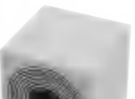


Sealed modules for Fuyansheng electronic frames. Based on Fuyansheng Electronics' Multidiameter™ (multipath) technology, a single module can seal cables or pipes of different diameters by simply peeling off the core layer. If the center plug is not removed, the module is used as a spare part to prepare for future expansion.



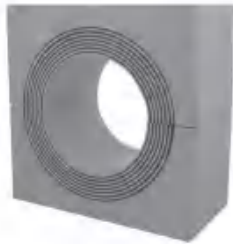
- ◆ Modules suitable for RM components
- ◆ Seals cables and pipes with diameters between 3.0-99.0mm (0.118"-3.898") OD

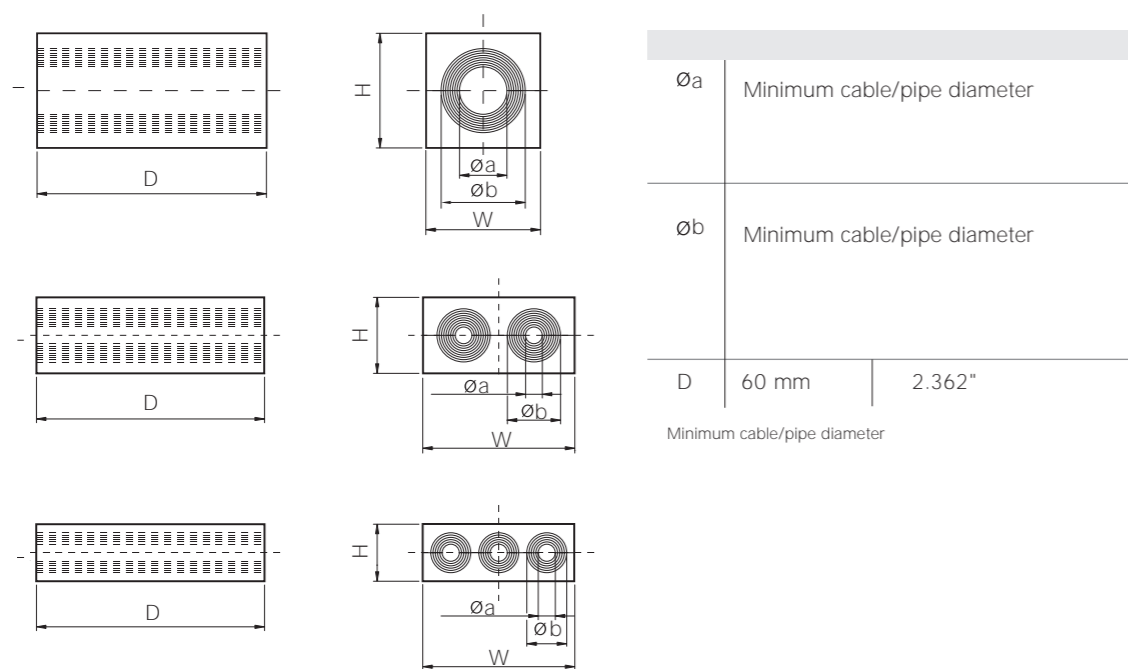


Fuyansheng electronic sealing module with center plug



Module Model	Number of cables/pipes	Suitable cable/pipe diameter		External dimensions HxW(D=60mm)	Order number
		Øa-Øb (mm)	Øa-Øb (inch)		
 RM 15	1	0+ 3.0-11.0	0+ 0.118-0.433	15x15	058116
 RM 15w40	3	0+ 4.0-10.5	0+ 0.138-0.413	15x40	058416
 RM 20	1	0+ 4.0-14.5	0+ 0.157-0.571	20x20	058226
 RM 20w40	2	0+ 4.0-16.5	0+ 0.138-0.650	20x40	058426
 RM 30	1	0+ 10.0-25.0	0+ 0.394-0.984	30x30	058336
 RM 40	1	0+ 21.5-34.5	0+ 0.846-1.358	40x40	058446
 RM 40 10-32	1	0+ 9.5-32.5	0+ 0.374-1.280	40x40	058446-1
 RM 60	1	0+ 28.0-54.0	0+ 1.102-2.126	60x60	058666
 RM 60 24-54	1	0+ 24.0-54.0	0+ 0.945-2.126	60x60	058666-1

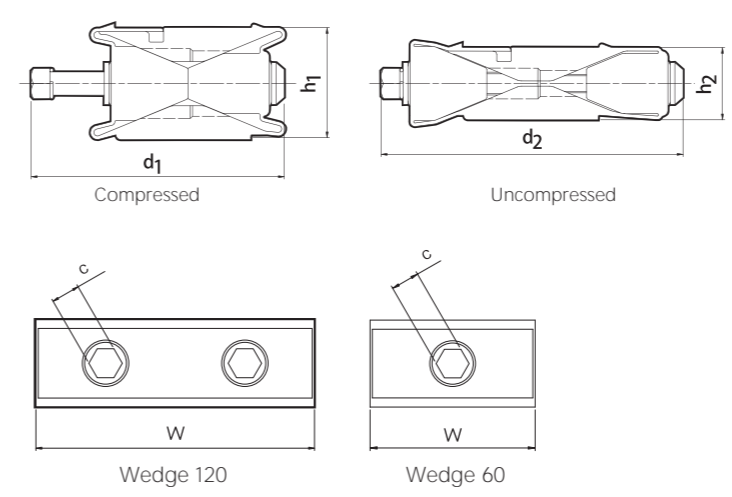
Fuyansheng electronic sealing module with center plug

Module Model	Number of cables/pipes	Suitable cable/pipe diameter		External dimensions HxW(D=60mm)	Order number
		Øa-Øb (mm)	Øa-Øb (inch)		
 RM 60 woc	1	28.0-54.0	1.102-2.126	60x60	060666
 RM 90 woc	1	48.0-71.0	1.890-2.795	90x90	060996
 RM 120 woc	1	67.5-99.0	2.657-3.898	120x120	060116



Wedge fastening kit/component, acid-resistant stainless steel



Wedge tightening block model	External dimensions mm/inch		Weight kg/lb		Order number
Wedge 120 AISI 316 	120	4.724	0.8	1.764	059126
Wedge 60 AISI 316 	60	2.362	0.4	0.882	059066



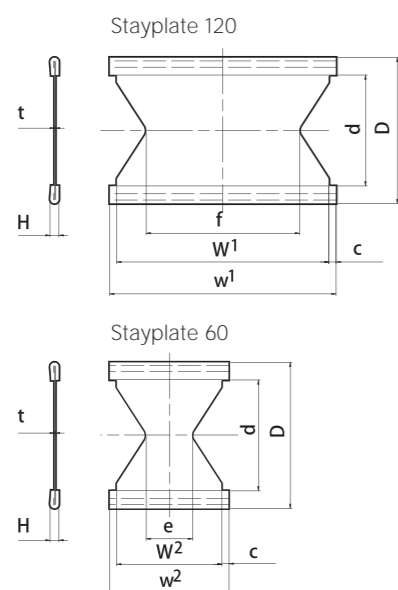
Pos	(mm)	(in)
d1	109	4.291
d2	130	5.118
h1	48	1.890
h2	29	1.142
c	SW 13	SW 0.512

Note: All dimensions are reference values

Stayplate

Stayplate model	Matching sealing space mm/inch		Weight kg/lb		Order number
Stayplate 120 AISI 316 	120	4.724	0.1	0.243	050126
Stayplate 60 AISI 316 	60	2.362	0.06	0.132	050066

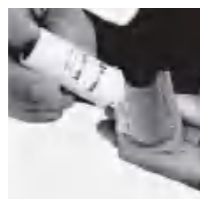
AISI 316 acid-resistant stainless steel



Pos	(mm)	(in)
c	4	0.157
d	62	2.499
e	26	1.024
f	86	3.386
t	0.5	0.020
D	82	3.228
H	5	0.197
W ¹	119	4.685
w ¹	127	5.000
W ²	59	2.323
w ²	67	2.638

Note: All dimensions are reference values

Lubricant



Natural tallow is used to lubricate the sealing module, Fuyansheng electronic clamping parts and the inside of the frame to achieve a tighter and more secure seal.